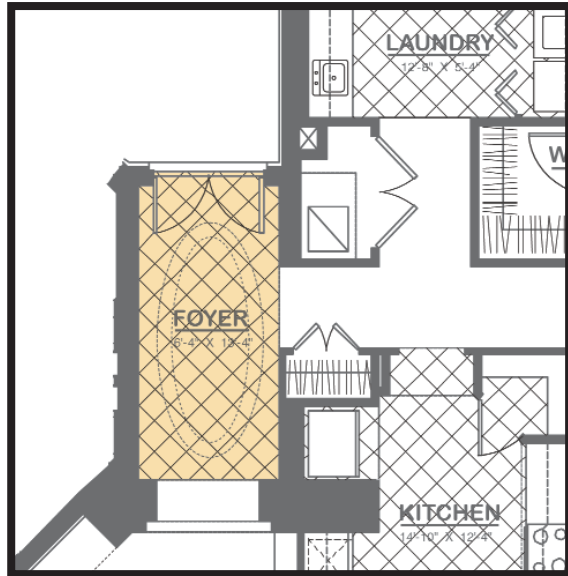


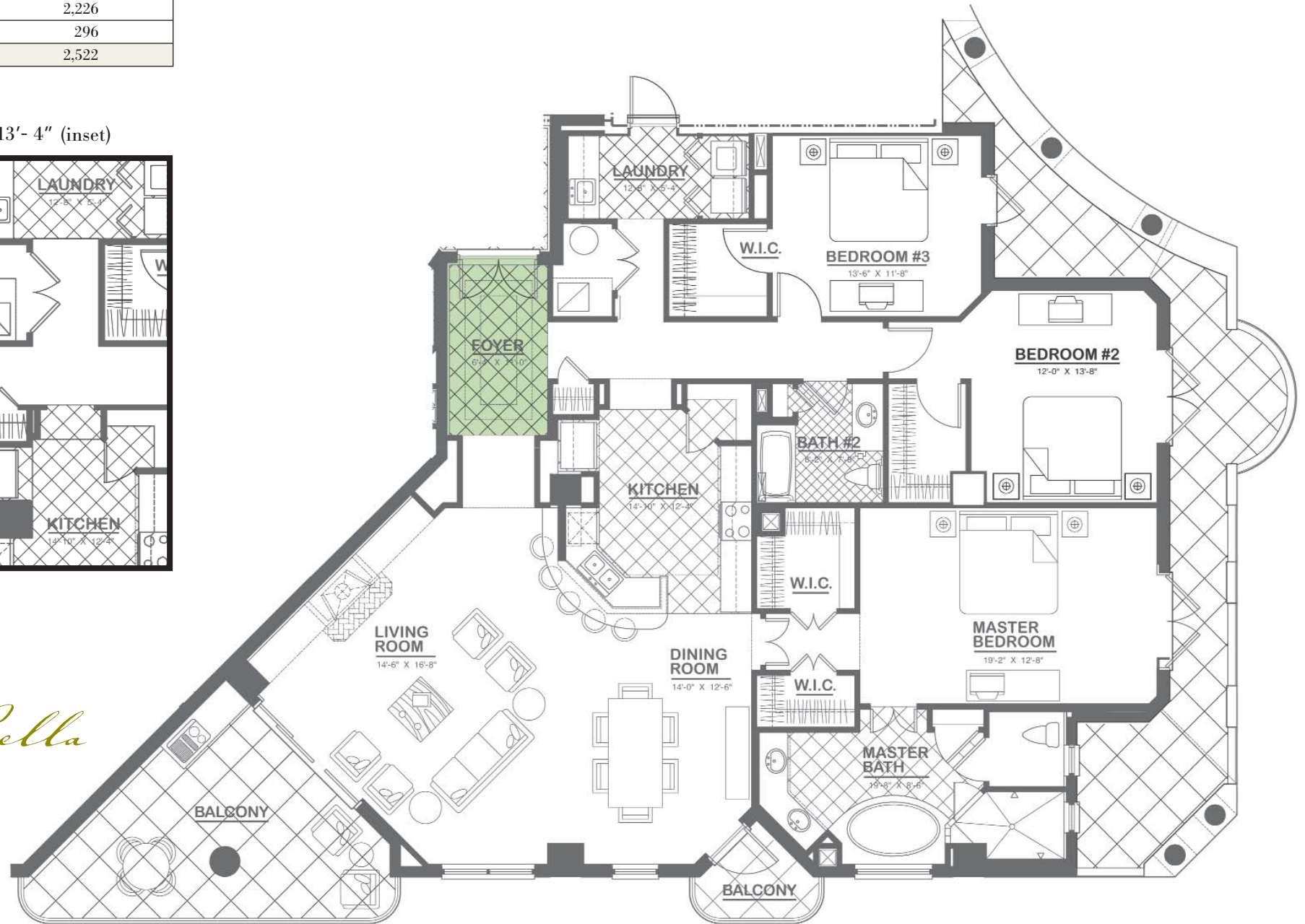
# Sago Palm • Floors 2 - 4

Sq. Footage	Flr. 2	Flrs. 3-4
Living Area	2,226	2,226
Balcony	659	296
Total	2,885	2,522

Foyer for Floors 2 - 4:  
6'-4" x 11'-0" or 6'-4" x 13'-4" (inset)



*Palma Bella*

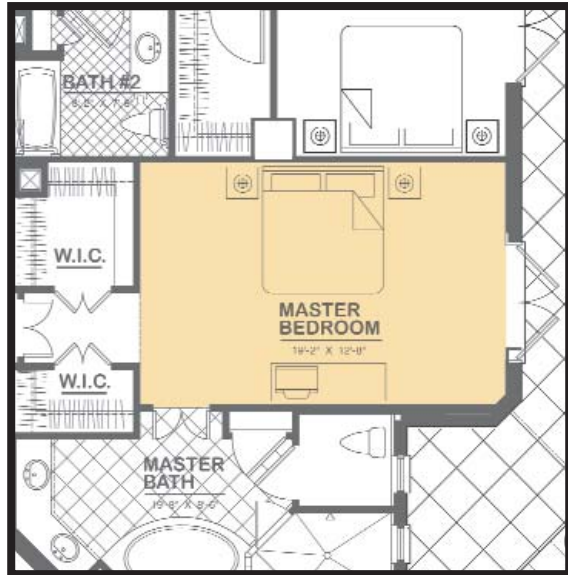


*Plans, material and specifications are subject to architectural, structural, and other revisions as they are deemed advisable by the developer, builder, or architect, or as may be required by law.*

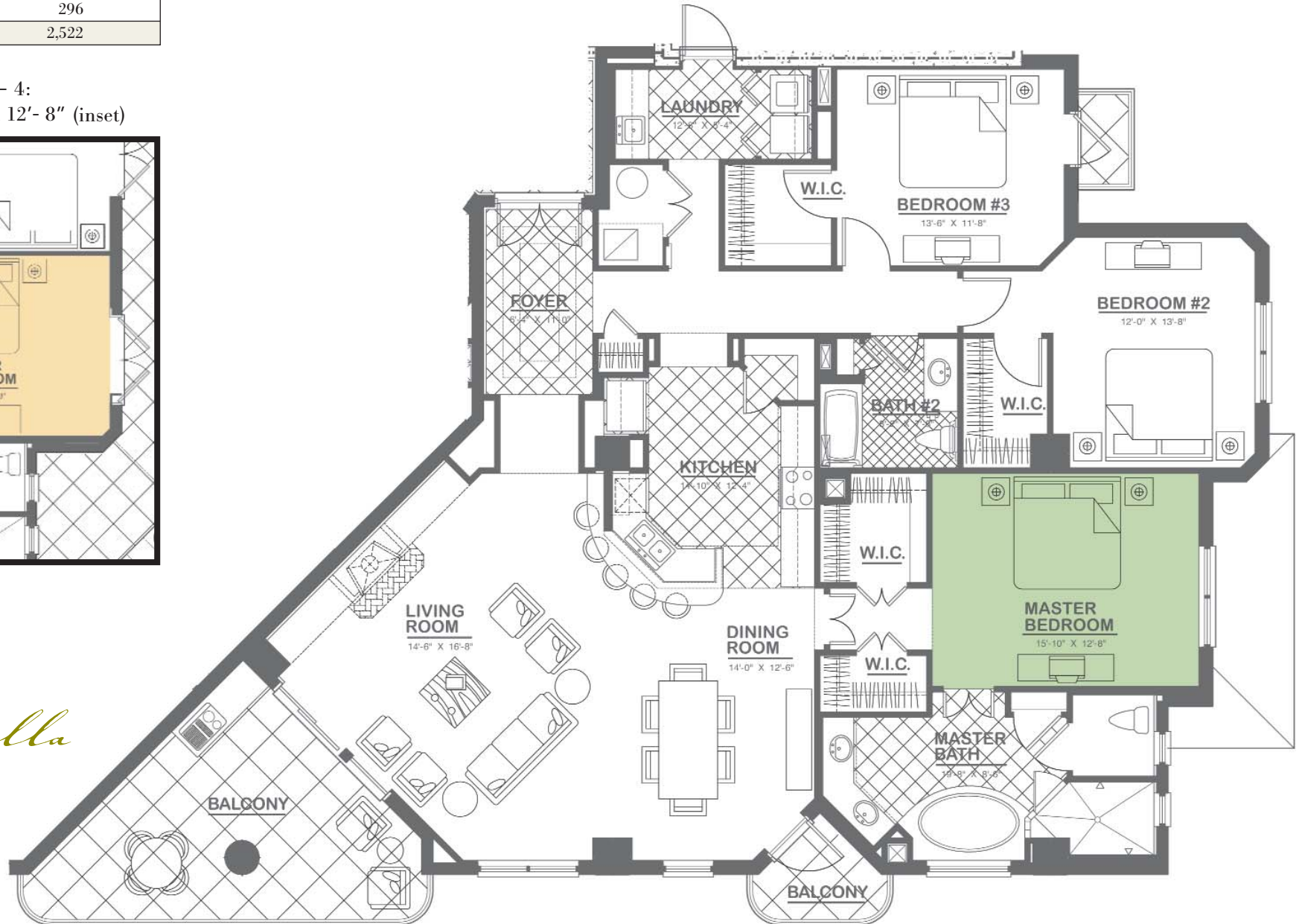
# Sago Palm • Floors 2 - 4

Sq. Footage	Flr. 2	Flrs. 3-4
Living Area	2,226	2,226
Balcony	659	296
Total	2,885	2,522

Master Bedroom for Floors 2 - 4:  
15'- 10" x 12'- 8" or 19'- 2" x 12'- 8" (inset)



*Palma Bella*



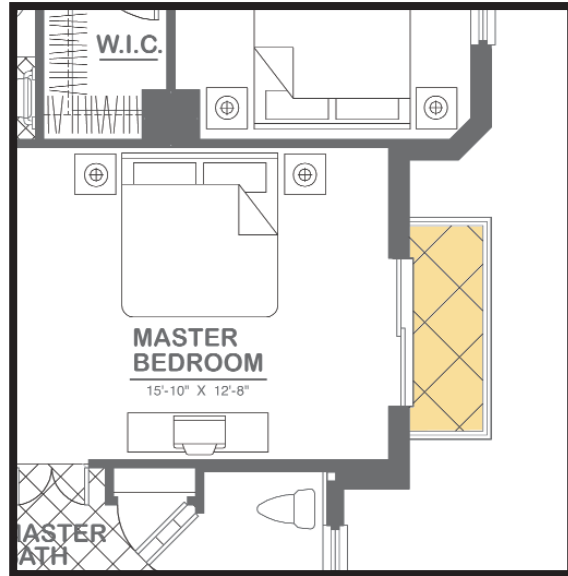
*Plans, material and specifications are subject to architectural, structural, and other revisions as they are deemed advisable by the developer, builder, or architect, or as may be required by law.*

# Sage Palm • Floors 2 - 11

Sq. Footage	Flr. 2	Flrs. 3-4	Flr. 5	Flrs. 6-10	Flr. 11
Living Area	2,226	2,226	2,182	2,182	2,182
Balcony	659	296	296	326	296
Total	2,885	2,522	2,478	2,508	2,478

Floors 6 - 10: West Balcony (inset)

Floors 3 - 5, 11: No West Balcony



*Palma Bella*



Floor 2 Only:  
West Balcony

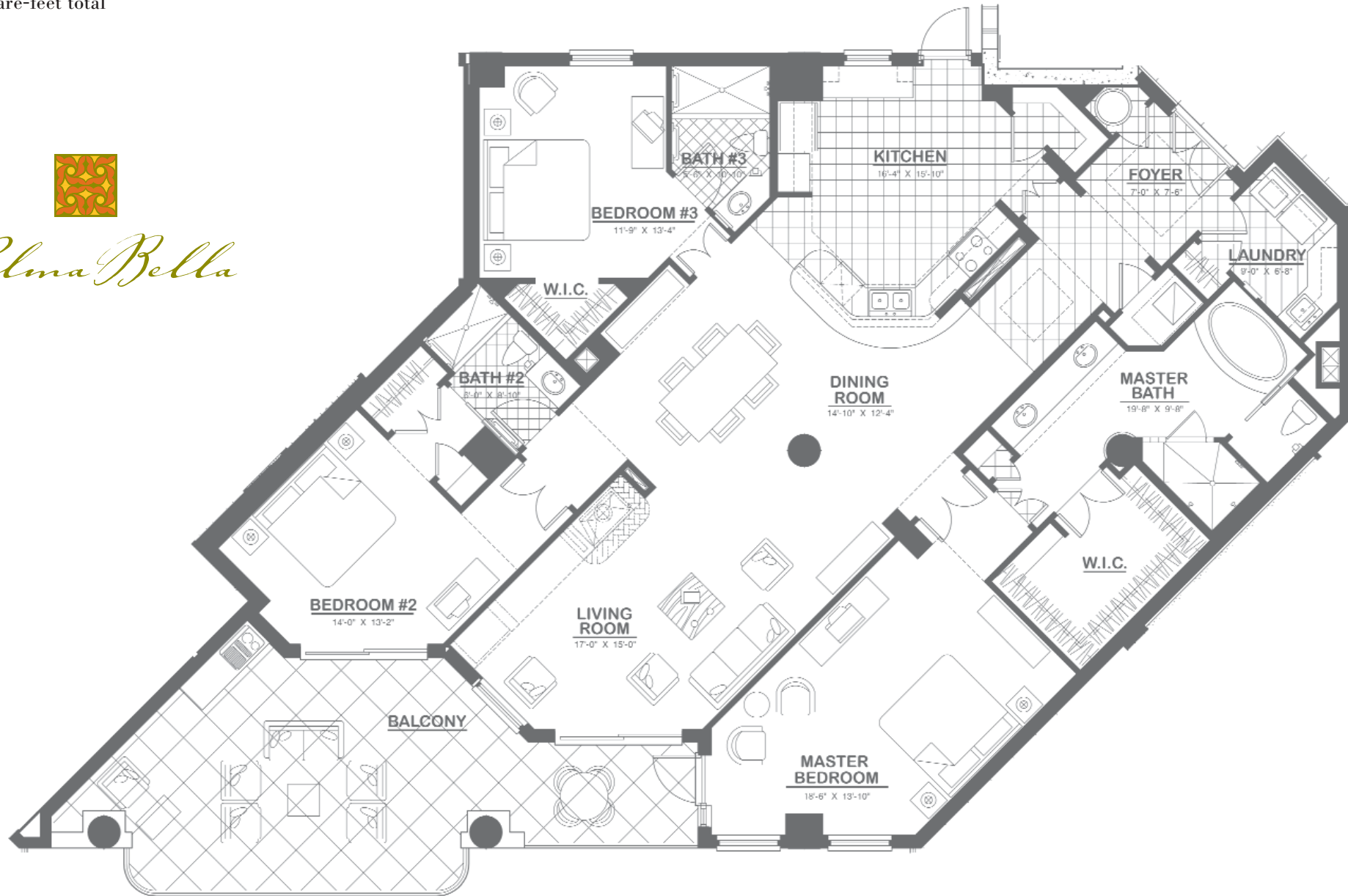
Plans, material and specifications are subject to architectural, structural, and other revisions as they are deemed advisable by the developer, builder, or architect, or as may be required by law.

# Canary Island Palm • Floors 2 - 11

2,425 square-foot living area  
444 square-foot balcony  
2,869 square-feet total



*Palma Bella*



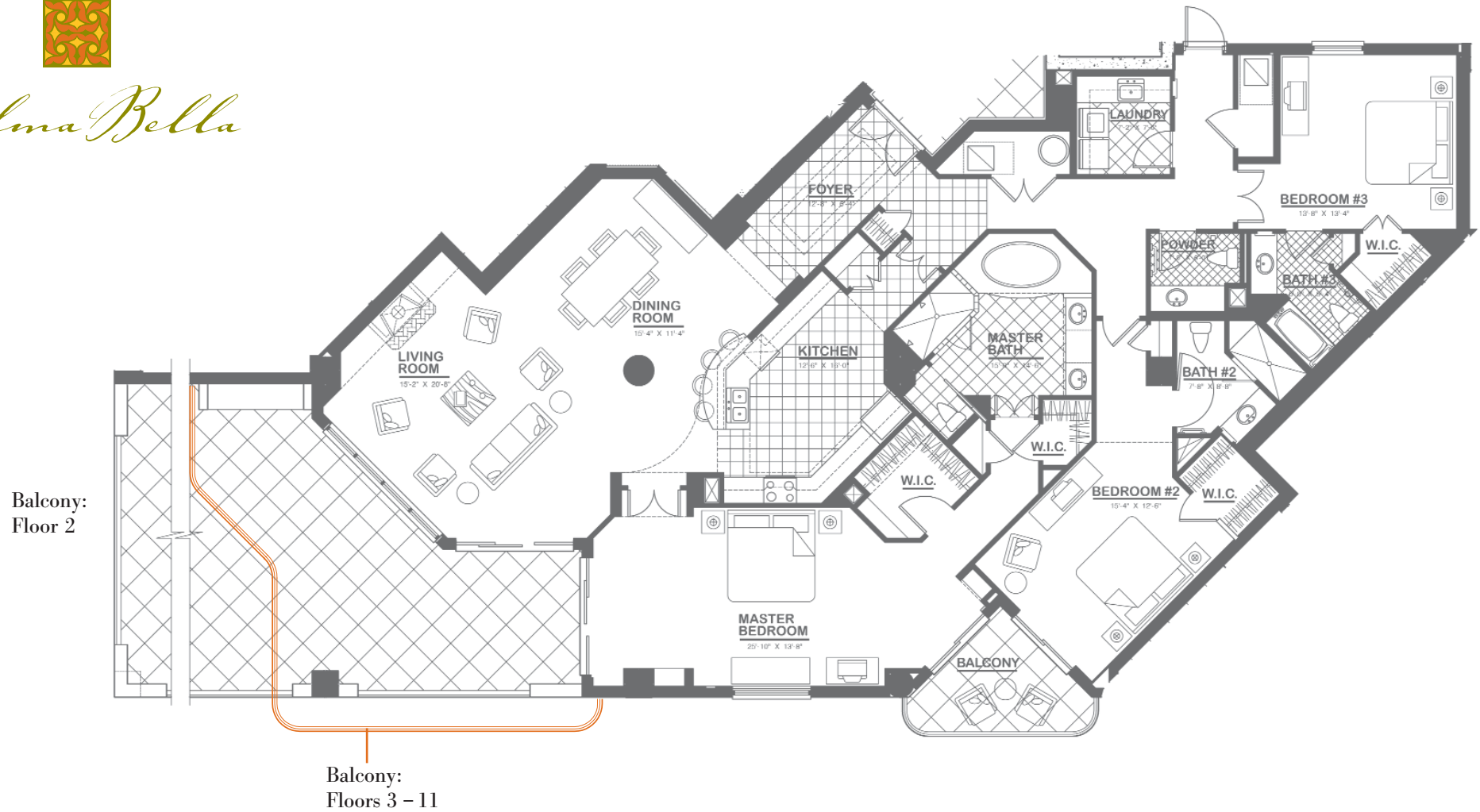
*Plans, material and specifications are subject to architectural, structural, and other revisions as they are deemed advisable by the developer, builder, or architect, or as may be required by law.*

# Lady Palm • Floors 2 - 11

Sq. Footage	Flr. 2	Flrs. 3-11
Living Area	2,864	2,864
Balcony	863	582
Total	3,727	3,446



*Palma Bella*



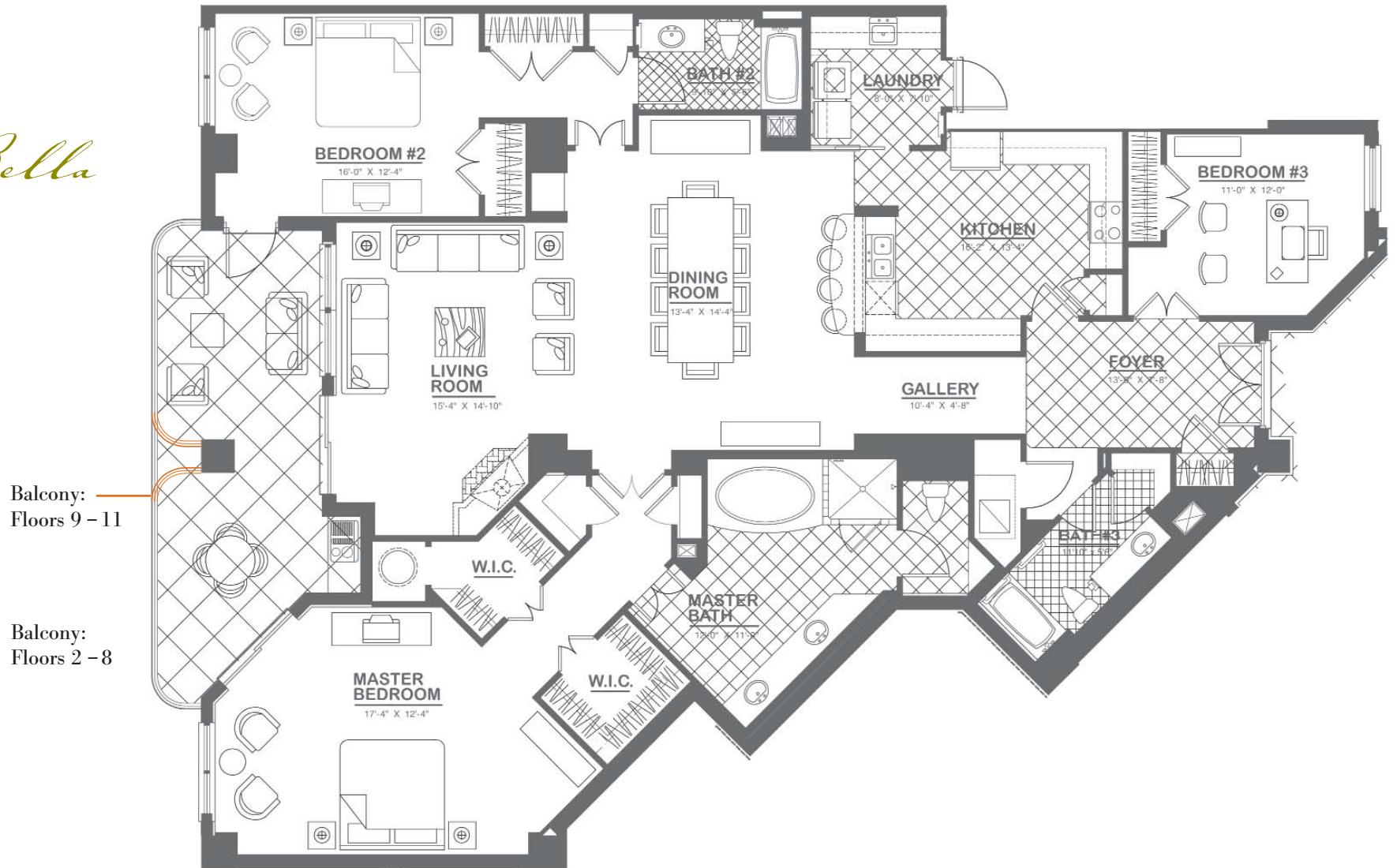
*Plans, material and specifications are subject to architectural, structural, and other revisions as they are deemed advisable by the developer, builder, or architect, or as may be required by law.*

# Queen Palm • Floors 2 - 11

Sq. Footage	Flrs. 2-8	Flrs. 9-11
Living Area	2,546	2,546
Balcony	295	276
<b>Total</b>	<b>2,841</b>	<b>2,822</b>



*Palma Bella*



*Plans, material and specifications are subject to architectural, structural, and other revisions as they are deemed advisable by the developer, builder, or architect, or as may be required by law.*